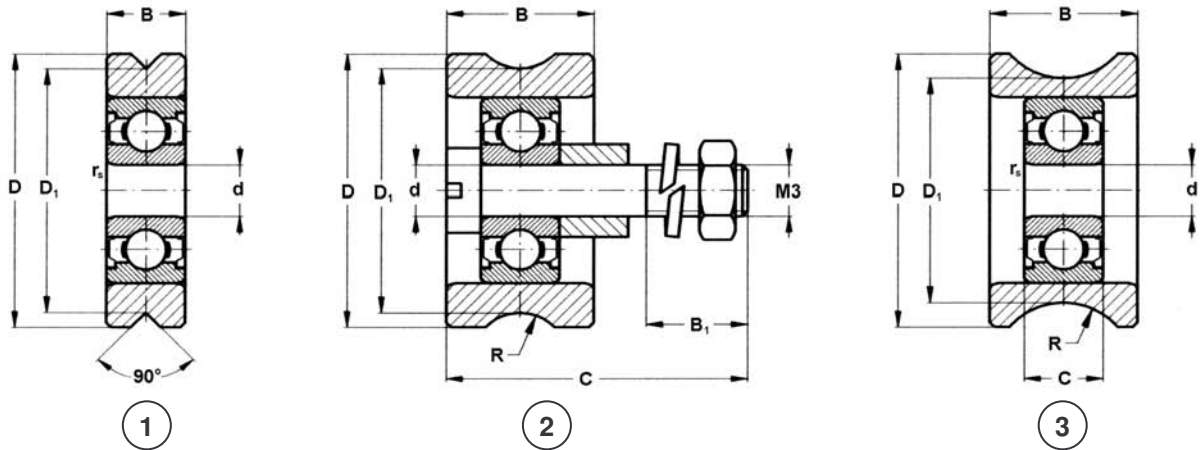


Special bearings manufactured on order

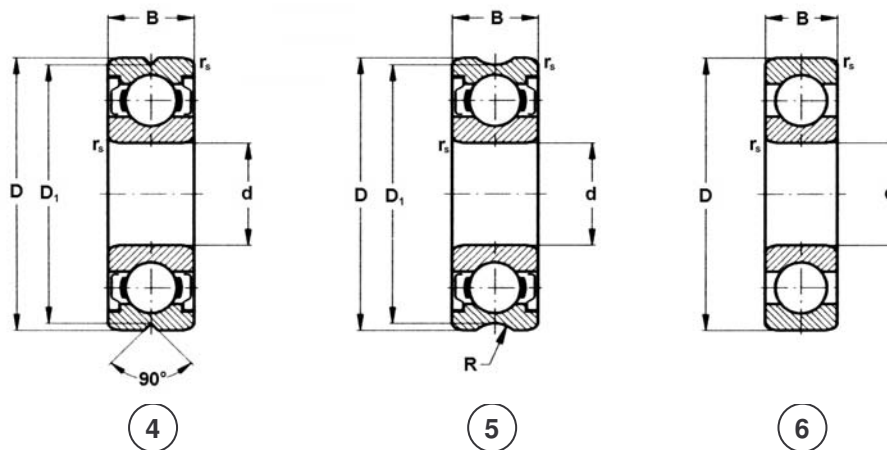


Special Single Row Ball Bearings – Rollers PLC (1)

Designat. of bearing	Fig.	Dimensions								Load capacity		Speed limit	
		d	D	B	C	$r_{s \min}$	D_1	B_1	R	dynamic $C_r^{*1)}$	static $C_{or}^{*1)}$	with plastic lubricant	with oil
		[mm]								[N]		[min^{-1}]	
PLC 81-4	1	3	15	4	-	0,15	13	-	-	490	216	40 000	-
PLC 81-1	2	3	15,15	16	8	-	13,237	4,5	2,45	490	216	40 000	-
PLC 81-3	3	3	15,15	4	8	0,15	12	-	4	490	216	40 000	-

Designat. of bearing	Fig.	Weight	Shields *2)	Cage	Radial clearance		Accuracy
					min	max	
		[g]			[μm]		
PLC 81-4	1	2,5	2ZR	Y	8	23	P0
PLC 81-1	2	6,7	2ZR	Y	8	23	P0
PLC 81-3	3	5,2	2ZR	Y	8	23	P0

Special bearings manufactured on order

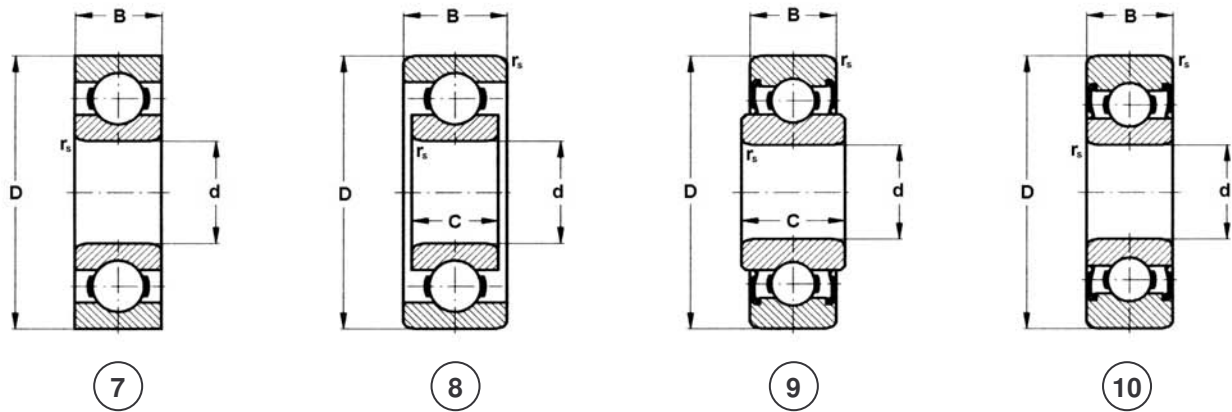


Special Single Row Ball Bearings – Rollers PLC (2)

Designat. of bearing	Fig.	Dimensions								Load capacity		Speed limit	
		d	D	B	C	r _{s min}	D ₁	B ₁	R	dynamic C _r ^{*1)}	static C _{or} ^{*1)}	with plastic lubricant	with oil
		[mm]								[N]		[min ⁻¹]	
PLC 01-17	4	5	16	5	-	0,3	15	-	-	1 430	735	35 000	-
PLC 01-17-1	5	5	16	5	-	0,3	14,9	-	2	1 430	735	35 000	-
PLC 01-15	6	7	19	6	-	0,3	-	-	-	2 200	1 160	*3)	-
PLC 01-16	4	8	22	7	-	0,3	21,1	-	-	2 500	1 340	35 000	-
PLC 01-16-1	5	8	22	7	-	0,3	20,9	-	2	2 500	1 340	35 000	-

Designat. of bearing	Fig.	Weight	Shields ^{*2)}	Cage	Radial clearance		Accuracy
					min	max	
		[g]			[μm]		
PLC 01-17	4	4,7	2ZR	J	2	13	P0
PLC 01-17-1	5	4,6	2ZR	J	2	13	P0
PLC 01-15	6	6,7	-	-	2	13	P0
PLC 01-16	4	11,5	2ZR	J	2	13	P0
PLC 01-16-1	5	11,3	2ZR	J	2	13	P0

Special bearings manufactured on order

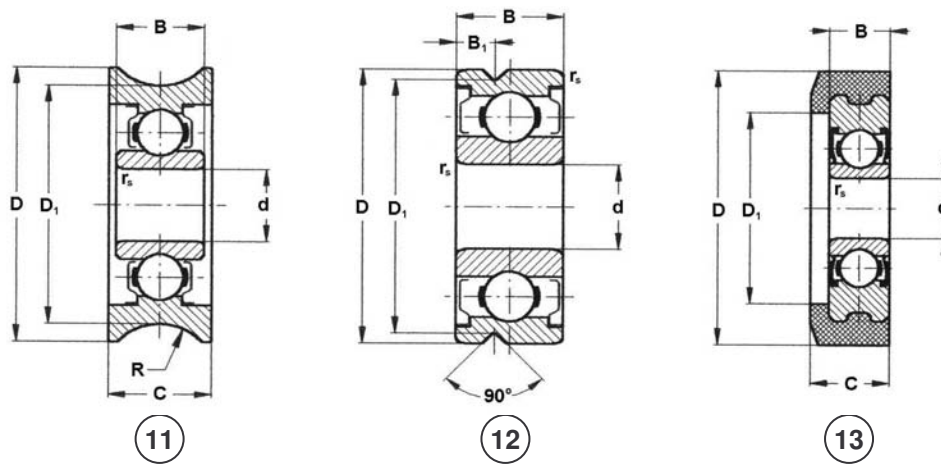


Special Single Row Ball Bearings – Rollers PLC (3)

Designat. of bearing	Fig.	Dimensions								Load capacity		Speed limit	
		d	D	B	C	$r_{s \text{ min}}$	D_1	B_1	R	dynamic $C_r^{*1)}$	static $C_{or}^{*1)}$	with plastic lubricant	with oil lubricant
		[mm]								[N]		[min^{-1}]	
PLC 01-32	7	7	19	6	-	0,3 *4)	-	-	-	2 200	1 160	35 000	42 000
PLC 02-4	8	8	24	7	8,5	0,3	-	-	-	1 260	944	*3)	
PLC 02-12	9	8	28	10,1	8	0,3	-	-	-	3 550	1 930	24 000	-
PLC 03-21	10	10	32	9	-	0,6	-	-	-	4 500	2 240	17 000	-
PLC 02-24	10	11,1	30	9	-	0,6	-	-	-	4 500	2 240	17 000	-

Designat. of bearing	Fig.	Weight	Shields *2)	Cage	Radial clearance		Accuracy
					min	max	
		[g]			[μm]		
PLC 01-32	7	7,5	-	J	15	30	P0
PLC 02-4	8	17,3	-	J	60	120	*5)
PLC 02-12	9	26,5	2RSR	J	2	13	P0
PLC 03-21	10	36,5	2RSR	J	2	13	P0
PLC 02-24	10	31,8	2RSR	J	8	20	P0

Special bearings manufactured on order



Special Single Row Ball Bearings – Rollers PLC (4)

Designat. of bearing	Fig.	Dimensions								Load capacity		Speed limit	
		d	D	B	C	$r_{s \min}$	D_1	B_1	R	dynamic $C_r^{*1)}$	static C_{or}	with plastic lubricant	with oil
		[mm]								[N]		[min^{-1}]	
PLC 01-47	11	5	19	6	7	0,3	16,5	-	4	1 340	735	35 000	-
PLC 01-49	12	4	13	5	-	0,2	12	1,8	-	900	415	38 000	-
PLC 02-10	13	5	32	5	6,5	0,3	16	-	-	1 340	735	22 000	-

Designat. of bearing	Fig.	Weight	Shields *2)	Cage	Radial clearance		Accuracy
					min	max	
		[g]			[μm]		
PLC 01-47	11	8,1	2ZR	J	2	13	P0
PLC 01-49	12	2,9	2ZR	J	2	13	P0
PLC 02-10	13	8,5	2RSR	J	8	20	P0

Comment:

*1) If the bearing is used as a roller, the C_r and C_{or} load capacity values as well as speed limits are decreased to 2/3 of the values in the table.

*2) Both-sides shielded bearings (-2ZR,-2RSR) are filled up with plastic lubricant.

*3) The bearings are intended for pendulum motions or low speed limits.

*4) The bearings have outer rings with sharp edges, without fillets.

The dimension and running accuracy of the bearings are decreased.